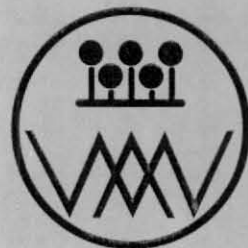


Village Voice



Official Journal of the Queen Street and West Woollahra Association • No. 73 August 2001



Queen Street & West Woollahra Association

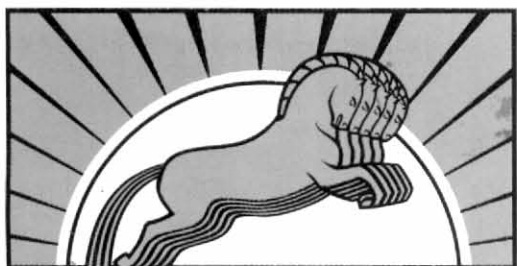
invitation to Annual Dinner & Auction

Thursday, August 30, 2001
7.00 pm for 7.30 pm
Light Brigade Hotel Restaurant

Special Guest Speaker
ROD McGEOGH

Pre-Dinner Drinks and Canapes, 3 Course Dinner
\$85 per person

Reservations
Phone 9328 1154



CHARGE INTO THE LIGHT BRIGADE

The new restaurant at the Light Brigade Hotel
Cnr Jersey Road and Oxford Street, Woollahra
Phone: 9331 2930

Open for Lunch Friday to Sunday and
Dinner Tuesday to Sunday
Seasonal Menus and Daily Specials
by Chef Emma Woods

DIAL-A-PAVER

Paving
Landscaping
Excavation

9327 7777

Eddy & Moloney

YOUR LOCAL SOLICITORS AND ATTORNEYS

Specialising in conveyancing, local court work and commercial litigation. Initial consultancy free.

194 Underwood Street, Paddington.
PO Box 27, Woollahra 2025.

Ph: 9327 8606
Fax: 9363 2652

◆ MICHAEL A GREENE ANTIQUES ◆

108 QUEEN STREET, WOOLLAHRA

PHONE 02 9328 1712

We are always buying good porcelain, glass, silver and jewellery.

NEW DEVELOPMENT CONTROL PLAN FOR WOOLLAHRA AND WEST WOOLLAHRA HERITAGE CONSERVATION AREA

Community Consultation Meeting

THE QSWWA was well represented at the Community Consultation Meetings held at Woollahra Council on April 26 and May 3.

The Association has led the charge to modify the original April proposal to ensure better representation of the unique character of our area. The new plan presented by architects Allen Jack and Cottier splits the area into precincts and then classifies all properties as either:

1. Heritage
2. Contributory
3. Non-contributory.

Heritage items are proposed to be the most closely controlled; rules for building modification will be tailor-made and specific, thus giving clear-cut guidelines. It is hoped that this will give more strength to Council decisions and

will deter the Land and Environment Court from interference.

Contributory items are proposed to include buildings which are historically, socially, aesthetically or architecturally significant, or are attached or adjacent to a heritage item in the streetscape. This is a new category and modification will be subject to specific controls.

Non-contributory items are less significant and will be subject to general controls, including precinct controls.

We are awaiting council notification as to when and where the final draft will be displayed.

Ken Gresham

Editor's note: Will these new regulations have any effect on the preservation of Joan Sutherland's former home at 115 Queen Street? It certainly fits into the category of contributory item.

Council to have total responsibility for parking

ONCE ratified by Parliament in September responsibility for parking police will rest totally with local councils. (Formerly this responsibility was shared between the State Police Department and local councils.) Woollahra Council will employ extra parking police to cover the five Woollahra wards. Hopefully there will be an adequate number to do a good job.

Dopey Parking Rules

COUNCIL parking police are not allowed to book cars on 'No Parking' and 'No Standing' signs unless they have undergone a training course at the Goulburn Police Academy. They can, however, book cars which park parallel to driveways, even if the car belongs to the owner of the driveway. (In practice, they don't usually book a car parked across but parallel to a driveway unless there is a complaint.) But both these rules seem a bit dopey, and both only add to the parking congestion on our crowded streets. **Annette Robinson**

PARKING METERS IN QUEEN STREET?

DO we want parking meters in Queen Street? Parking metres are to be installed in Oxford Street Paddington. Their installation in Double Bay is in the community consultation stage. Their installation in Jersey Road was rejected by the residents. Mayor Christopher Dawson told the Annual General Meeting of the QSWWA in March 2001 that there were no immediate plans to put them in Queen Street. However the Mayor did say that in principle he agreed with the installation of these metres, where **residents did not have to pay** and only non residents paid for the privilege of parking.

It does seem inevitable that more parking meters will eventually be installed in busy areas of Woollahra. Council feels the revenue collected by parking meters should be more than adequate to provide a profit, and at the same time allow Woollahra residents a place to park in their own area.

Generally it would seem that QSWW residents do not want parking meters, but are our assumption correct? What about shopkeepers and retailers in our area? How do they feel? We need your feedback so that we can represent you. Write to us at Village Voice. We will print as many letters as possible.

Drew Robertson

The Queen Street and West Woollahra Association Ltd

ABN 98 002 872 433



A residents' action group covering the area bounded by Jersey Road, Edgecliff Road, Oxford Street, West Woollahra. Affiliated with the National Trust.

Membership subscription rates:

Concession:	\$10.00
Individual:	\$22.00
Household:	\$33.00
Corporate:	\$55.00

Patron: Neville Wran

President: Heather Smith

V-President: Graham Freudenberg

Secretary-Treasurer: Philip Johns

Committee: Ian Angus, Lyndall Crisp, Graham Freudenberg, Ken Gresham, Philip Johns, Alex Nettis, Drew Robertson, Annette Robinson, Alan Smith, Lin Turnbull

Village Voice is published by the Queen Street and West Woollahra Association

Editor: Annette Robinson

Advertising: Philip Johns

All correspondence to Box 16 P.O.
Woollahra 2025

Ph: 9328 1154 Fax: 9328 1157

TRAFFIC REPORT

Traffic Hit List

QSWWA have decided to compile a **HIT LIST** of traffic woes which we will continually bring to the attention of Woollahra Council and the RTA. For a start:

1. The confusing lights at the intersection of Queen Street, Oxford Street and Moore Park Road.

Cars turning right from Queen Street into Oxford Street on the green light are in mortal danger of being hit by cars going straight ahead from Moore Park Road into Queen Street, also on the green light, and visa versa. In fact the cars turning right into Oxford Street from Queen Street should wait until the coast is clear before turning and if an accident occurs they are in the wrong. But drivers unfamiliar with the area and the confusion of lights often assume they have the right of way to turn right with the green light. Many of us have narrowly avoided a bad accident at this intersection.

A flashing yellow arrow for this right turn into Oxford Street would rectify the problem. Do we have to wait for a fatality before anything is done?

2. The Holdsworth and Queen Street intersection.

Turn right from Holdsworth at your peril. Cars (usually land rovers) and even large trucks continually park on the corner, totally ignoring the 'no standing' sign and blocking any sight of cars coming south down Queen Street. On Saturday July 7 a huge truck parked on this corner all day!

3. We need better parking and traffic controls at the Jersey Road and Holdsworth Street intersection

where the new 'no stopping' signs are continually ignored.

Any more traffic hit list woes? Write to QSWWA attention Ken Gresham
Ken Gresham



Holdsworth and Queen Street intersection. On July 7 this large truck parked here all day, totally obscuring vision in or out of Queen Street. The car parked on the "no standing" sign in Queen Street added to the danger.

Traffic - The Nightmare Continues

TRAFFIC issues continue to take up a disproportional amount of time at QSWWA meetings. The Association was represented at the latest Paddington Traffic Working Party. It is imperative that we attend these meetings because neighbouring traffic decisions can have an overwhelming effect on the volume of vehicles passing through our area.

At this meeting a plan sponsored by the Paddington

Society was discussed. It incorporated a scheme to narrow down Glenmore Road from Brown Street to Oxford Street by planting trees on the roadway and imposing a 40kph speed limit. However it was decided that this was an 'Option E' by stealth which would discourage Paddington through traffic and force drivers to find an alternative route. Inevitably this alternative will be through West Woollahra.

Ken Gresham

STREETWATCH

WE have 170 separate complaints and recommendations to follow up with Council. These recommendations for action have been made by our Streetwatch Committee and we are waiting an answer from Council as to when they will be attended to.

Meanwhile one of our most urgent requests to council: **Remove the rectangular raised concrete borders surrounding the trees in the Queen Street shopping area between Holdsworth and Moncur Streets.** Initially the area inside the borders were planted with mondo grass put

there to protect the trees from pedestrians. The grass did not survive and the raised borders are now a hazard to pedestrians - and try wheeling a pram along the street.

Council should be aware that a recent High Court judgement has now effectively abolished councils' former immunity from liability unless they were negligent. This judgement is likely to be an expensive one for councils in the future. The **average payout for a "trip and fall" in the courts is \$38 000.** And it's ratepayers' money they'll be spending.
Annette Robinson



**I & B PERRYMAN
ORIENTAL CARPETS**

100 Queen Street,
Woollahra
Ph: 9327 3910

Old, antique and decorative rugs,
carpets and textiles.
We buy, sell, clean and restore.

Wishing all our clients a happy festive season.

COMPUTERS

With local support and on-site warranties

- ☐ If you're a beginner and you need a new PC set-up & some training
- ☐ If your PC needs servicing or you need to trade-up to a new PC
- ☐ If you want high speed Internet access and networking

It helps if you have local support

Johnson Computers

130 Oxford Street (between Moncur & Wallis Streets)
Woollahra 2025

LETTERS TO THE EDITOR

Rubbish in Holdsworth Park

I have been privileged to have lived in the Woollahra municipality for the last fifty years. The leafy, well-cared-for residential and commercial streets, the interesting population and charming houses create a special atmosphere.

I recently purchased a house in Holdsworth Street and last week my two-year-old granddaughter and I went to the park adjacent to the Holdsworth Community Centre. I was shocked to see dangerous pieces of broken glass, old beer bottles and tins, filthy papers, used syringes and even a dead rat littering this shabby, uncared-for public space. Dogs had obviously used this park as their 'loo' in spite of the prominent \$500 dog fine sign. A neighbour who helped me to collect this rubbish told me that the park is always neglected. A rubbish bin was nowhere to be seen.

Woollahra Council is no doubt aware of the community criticism of its spending \$14 million odd on the reconstruction of the Council premises. When one sees how little money is spent on this small park next to a child care centre one finds this criticism understandable.

Name and address supplied

Tree Death Notice

A death notice from Woollahra Council has appeared on a highly developed camphor laurel tree in Moncur Street, Woollahra, at the corner of Queen Street and opposite Queens Court.

This tree is very much a local landmark. It was only following strong local protest that it was reprieved in 1997 during paving work to create Banjo Patterson Walk.

Despite its robust appearance the Council claims the tree is suffering a terminal disease and re-presents an incipient danger. It plans to remove it while doing paving work.

If we accept that the council is correct, surely another tree should be planted. The council would no doubt insist on this were the tree removed from private land. It is through the urging, and even funding, of residents over the years that Queen Street has become such a glorious leafy precinct. The Moncur Street corner

is its hub – and so visually in need of arboreal splendour.

Robin Brampton, Woollahra

Editor's note: The tree has now been removed. The Council has assured us that the tree was suffering from a rare fungal disease which would have resulted in its death from the canopy down within 12 months. The tree will be replaced with a Chinese Tallow Tree (Sapium). There is a similar species at Five Ways.

A plea and a thank you

Thank you for your article in Village Voice (regarding the graffiti).

Could we please make a plea to our neighbours not to leave junk at our front gate as it is difficult for us to remove it. And it is a hazard for the children.

Also a big thank you to our neighbours who keep a friendly eye on the place after hours, and who water our garden.

**Rosemary Cassim,
Holdsworth Street Community Centre**



Zigolini's Cafe Restaurant Fine Foods/Coffee

Zigolini's restaurant now has a new summer menu, come in and experience the quality of our food which remains reasonably priced. We would like to extend our gratitude to all our local customers who contribute to making Zigolini's a unique cafe.

Complete a la carte menu day and night

FULLY LICENSED.

Open 7 days

Breakfast and Lunch

From 7 am, Monday to Friday,

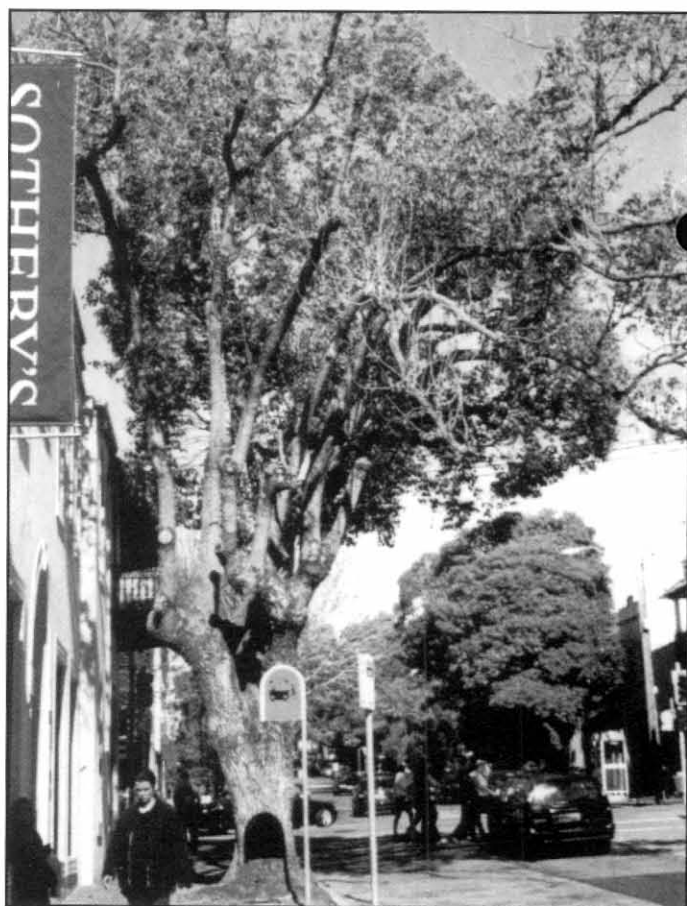
8am, Saturday and Sunday

Breakfast to 2.30 pm every day

Dinner Tuesday to Saturday. (Please Book.)

107 Queen Street, Woollahra

Ph 9326 2337



This camphor laurel tree on the corner of Moncur and Queen Street has been removed.

CHANGES TO PARKING AND CYCLING IN CENTENNIAL PARK

THE draft transport access and parking plan has been released after the long process of community consultation. It is now available for public comment and the plan can be viewed at Administrative Building of the Centennial Park and Moore Park Trust which is located behind the kiosk, or any of the local Council Chambers, Woollahra, Waverley, Randwick and South Sydney. It is also on the Queen Street and West Woollahra Community Notice Board outside Zigolinis.

The main principle behind the plan was to provide long term solutions that preserve the unique environment for future generations. This would be achieved by increasing the access to the Parklands as well as around the Parklands and ensure that it is a safe environment for all people and activities.

Major changes proposed are to move the parking of cars from under the trees to the left hand side of Grand Drive. This will help protect the tree roots from damage by cars and with appropriate landscaping would create a visual and practical improvement to the walking track area. This would reduce the number of car spaces available.

By moving the cars to the outside of Grand Drive, **the bike track will be moved to the inside and along the roadway next to the trees.** The direction of travel for the cyclists and skaters will also be changed to an anti-clockwise direction.. This bike track would be coloured in green similar to the red bus lanes now being seen around Sydney.

There are numerous initiatives that will require action with local councils and RTA to improve cycle and pedestrian

access at the intersections around the Parklands. Co-ordinating bus time tables and routes in and around the Parklands is part of the program to reduce the dependency of cars for access.

Other internal road closures, reconfiguring intersections, providing pedestrian crossing points at four areas across Grand Drive, signage, landscaping and upgrading horse tracks, jogging tracks and parking around the kiosk are all part of the major plan. Although car access inside Grand Drive will be reduced, limited parking will still be available.

This of course will cost a fair amount of money or \$5.04 million in fact. A number of funding sources are being reviewed but the controversial one will be the introduction of a paid parking scheme. This would be based on a pay and display system and the cost would be between \$1 - \$3 per day. By employing this program it is envisaged that the pay back period will be between 3 and 4 years.

Already there has been some very vocal opposition to this proposal by the cycling community who maintain there will be head-on collisions if the cyclists travel in the opposite direction to the traffic flow

Other users of the park maintain that Centennial Park is not meant to be a cycle track for high speed cycle training. Perhaps in the future a dedicated cycle track could be built in Moore Park where cyclist could train without being a threat.

The time for submissions to the Parklands changes is **now** as the viewing time has closed.

Philip Johns



The Bay Tree

*Gifts for people who
love to cook.*

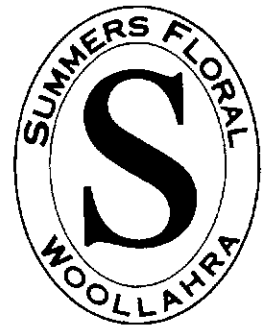
- *Copper pans • Glassware*
- *Linen and lots more*

40 Holdsworth Street, Woollahra

Phone 9328 1101

Fax 9363 5841

Email baytree@thebaytree.com.au



101 QUEEN STREET

WOOLLAHRA NSW 2025

PHONE: 9328 2475

FAX: 9362 4778



57 Queen Street Woollahra

TEL: **9326 1074**

4 garments
professionally drycleaned
\$26.50

Prepayment required please.
Bring in this coupon to receive
special offer. Usual surcharges
and conditions apply.

Exp. 30/9/01

ARRIVALS, DEPARTURES AND RELOCATIONS

WE are thrilled that Robbie Howard of Lynwood Café, Collector and Lynwood Stores Leichardt has expanded to Queen Street. **Lynwood Stores** is the brainchild of Robbie and well known restaurateur Anders Ousback. They now have a range of restaurant -quality meals which are vacuum packed and ready to serve in a matter of minutes. Robbie's delicious preserves are also available. Lynwood Stores is at Shop 8 Queens Court, phone 9362 9177.

Number 124 Queen Street has submitted a Development Application to Council for an internal fitout for a lifestyle store and coffee shop with internal seating for 28 people and alfresco seating for 8, with an Italian bakery at the rear. It is to be called **Pan d'Arte**. **Michael Carr, Art Dealer** is already open upstairs. **We are pleased to report that the existing ATM accessed from Queen Street is to remain operational.**

Antique dealers Peter Lane and Marie Francoise Fatton of Au Lion des Neiges have relocated from Queen Street to 76 Rush Street in the premises formerly occupied by Colin Lennox Antiques. Peter specialises in 18th and 19th century furniture and art, Marie Francoise in Tibetan art and antiques.

Rose and Heather, fine furniture makers, a New Zealand-based company, is now at 42-44 Queen Street. Their furniture is made from ancient Kauri buried in the swamps of New Zealand for up to 43000 years. Designs are classic and contemporary.

CedarCraft Designer Blinds, a shop selling **plantation shutters and blinds** has opened at the corner of Moncur and Wallis Streets where Penelope Sach was originally trading.

Moving House has relocated from Paddington to 101-103 Queen Street. Moving House will unpack your goods and chattels following a home move, arrange your cupboards and even hang your pictures. Contact owners Lee Hamlin, Elizabeth Yates or Catherine Brownjohn at 93633155.

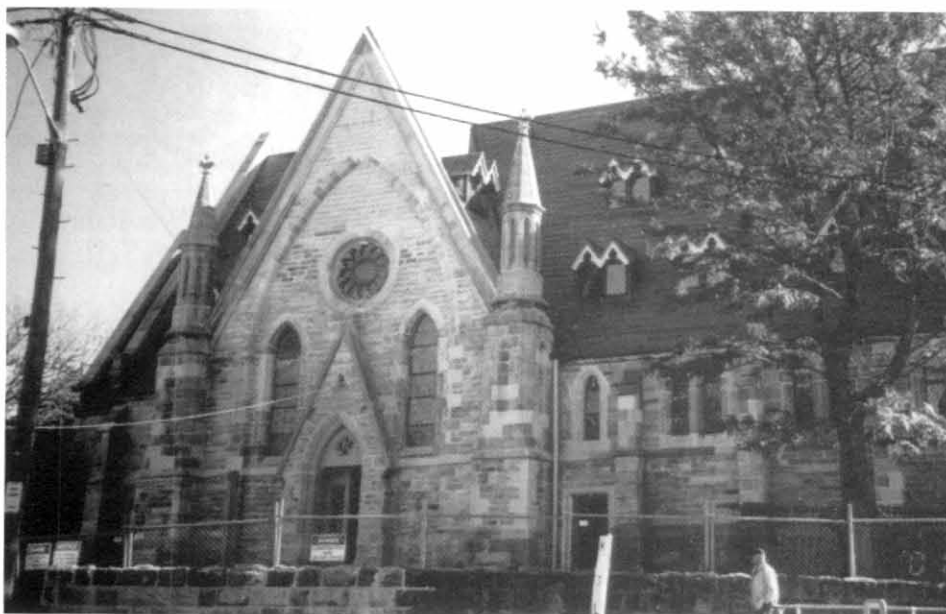
A new cutting edge art gallery, **Imaginality** has opened at 160 Queen Street. The first exhibition features the work of Jane Davenport, daughter of fashion retailer and designer, Liz Davenport. Jane's art is a mix of straight photography, digital manipulation, illustration and colour design. She blends the boundaries between traditional photography and the new digital age. Her affinity with the wilderness has led her to focus on nature in a fresh and innovative way. Jane's "Kamikazee Bee"



"Kamikazee Bee"

won the Photoshop World 20001 Excellence in Artistic Design award in Los Angeles. Jane's "Kamikazee Bee" won the Photoshop World 20001 Excellence in Artistic Design award in Los Angeles.

In August a new concept in lifestyle shops is scheduled to open in Queen Street on the **site of the old Commonwealth Bank**. Proprietors Michel Carpentier and Graham Alexander tell me it will be like a '**little speciality department store**' selling an eclectic mix of the finest quality fashion items, home décor, cosmetics, perfume, books, flowers and selected antiques. A 'tearoom' will encourage clients to linger and browse. At the time of going to press its name was still a secret.



The former **1877 Congregational Church** on the corner of Jersey Road and Moncur Street has now been converted into four executive townhouses. As each townhouse covers four floors it is not surprising that a lift has been installed. The dormer windows in the roof have been modelled on those in St Mary's Cathedral.

Townhouses in the old Church are nearing completion

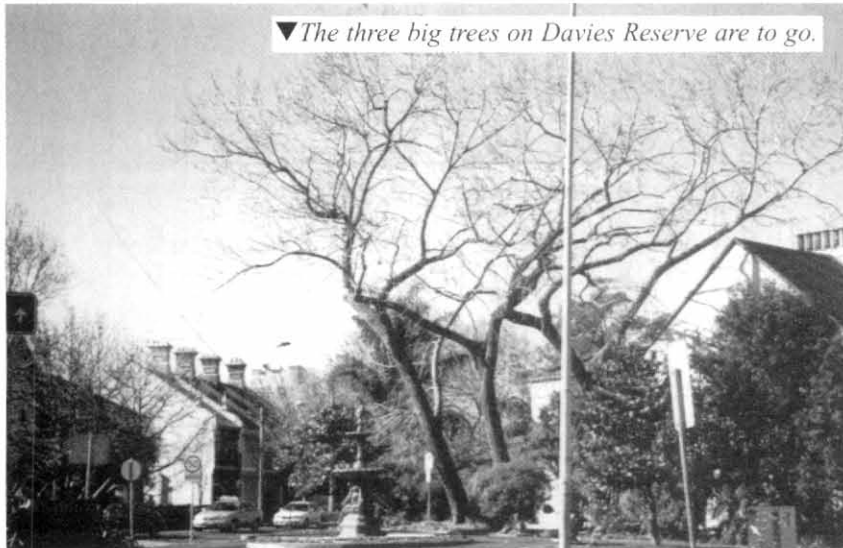
CHATSTREET

THE Queen Street and West Woollahra Community Notice Board next to Zigolini's on the Dorhaeur Lane car parking area has been refurbished and is now operational. Contact Committee Member Alan Smith at Istral Galleries 162a Queen Street Phone 93620648. Community notices welcome.

WE are pleased to report that the **fountain on Davies Reserve at the top of Queen Street** is working again. It

from the shops. What has happened to their commercial pick-ups? Come on fellows have a bit of consideration for the residents, we are your best customers.

A bouquet to Sam and Christine Leong, proprietors of the **Queen Street Newsagency**. Most mornings Sam can be seen sweeping the footpath in front of the shop - a gesture that others could emulate. And at last the newsagency is



▼ The three big trees on Davies Reserve are to go.

seems to have taken nearly as long to fix this as it did to build the new Council Chambers! The three enormous trees in this park are to go. Council officers say they are too near the brick wall at the back and that a fourth tree also growing there fell down into Queen Street a few years ago. It appears doubtful that they would be replaced. Hopefully the magnolias in front will grow quickly.

THE **takeaway food and coffee shops in Queen Street** are a popular mecca. They are always packed with locals getting their first, second or third coffee fix of the day. However they should lift their game in the back lane - it is constantly knee-deep in discarded cardboard boxes



▲ It's time takeaways in Queen St cleaned up their act

open when you need it - from 6am to 7pm weekdays and Saturday, 6am - 3pm Sundays.

GOOD NEWS! Our Jersey Road Police Station is to stay. Commissioner Ryan has confirmed that there will be no police station closures. "There are no plans for the closure of police stations and there is no cap on recruitment within the NSW Police Service," he said.

WHAT is happening at **72,74,76 Queen Street** - three vacant shop frontages? Apparently the owner of the three shops has applied to Council to have them rezoned to be three separate titles. Then one assumes they will be up for sale.



More sales with less fuss....

No wonder over 70% of our business is by referral from happy clients.

Isn't it time you met
**Louise Snowden
& Joe Abboud**
Principals

9328 6177

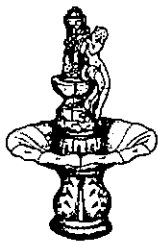
**Not all agents
are the same...**

- ▼ The agency is focused on the local area
- ▼ The Principals are active sales agents
- ▼ The sales team is small but skilled, with impeccable references
- ▼ The agency is located in a prominent location
- ▼ The agency keeps a data base of buyers ready to buy
- ▼ The agency offers a choice of Private Sale or Auction
- ▼ The agency reputation is one of high ethics and care
- ▼ The agency consistently achieves the highest prices in the area

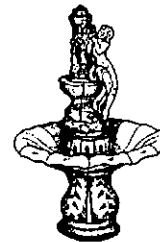
Richardson & Wrench
Woollahra



If you have news for our next edition of Chatstreet please contact the editor.



QUEEN STREET SHOPPING AND SERVICES GUIDE



Susan Avery
FLORAL DECORATORS

59 Jersey Road Woollahra • Tel 9363 1168 • Fax 9328 7415

RICHARD BANKS
**OP
TOM
METRIST**

Comprehensive eye
examinations.

Fashion and designer frames,
sunglasses and contact lenses.

QUEENS COURT, 118 QUEEN STREET, WOOLLAHRA
APPOINTMENTS MON-SAT PH 9328 2842

TIM McCORMICK
buys and sells

Rare Books – Manuscripts – Prints
Australian Paintings – Photographs
Australiana

92 QUEEN STREET, WOOLLAHRA 2025
Telephone 9363 5383 Facsimile 9326 2752



G L Auchinachie & Son
Antiques & Collectables

Specialising in 17th, 18th & early 19th
century English furniture, ceramics &
metalwares

43 Queen Street, Woollahra 2025. Ph (02) 9363 4033
Open 10.30am to 5.30pm, Monday-Saturday, or by appointment

Pasta Rosa

- Fresh pastas and raviolis
- Delicious wood-fired bread
- Flavoursome sauces and relishes
- Home cooked dinners every night

134 QUEEN STREET, WOOLLAHRA
Open six days, 9.30am to 7.30 pm Ph 9328 6368

*Women's Clothing, Shoes
and Accessories.*

reads

130 Queen Street, Woollahra NSW 2025 Telephone: (02) 9328 1036.



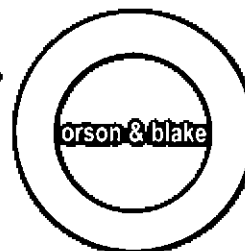
KIDSTUFF

AWARDED

*The Best Independent
Toy Retailer
IN AUSTRALIA*

126A Queen Street Woollahra
Phone (02) 9363 2838

For everything you
can't resist, fashion,
furnishings, decora-
tion and present
solutions. The best
of the latest



Open seven days a
week. Gift wrapping &
nationwide delivery.

83-85 Queen Street
Woollahra.
Phone: 9326 1155



CAMBODIA HOUSE

SHOP 10, QUEENS COURT
118 QUEEN STREET, WOOLLAHRA 2025



The Bay Tree

Gifts for people who love to cook.
Copper pans • Glassware • Linen and lots more

40 Holdsworth Street Woollahra NSW 2025 Australia
Phone 61 2 9328 1101 Fax 61 2 9363 5841
Email baytree@thebaytree.com.au