

VILLAGE VOICE

No. 60 NOVEMBER, 1995

Newsletter of the Queen Street and West Woollahra Association Ltd.

Address: PO Box 16, Woollahra, NSW 2025.

Administrator: Robin Brampton, 3/1a Tara Street, Woollahra, NSW 2025. Phone and Fax 362 0713.

The Queen Street and West Woollahra Association invites you to

A FESTIVE MEDITERRANEAN DINNER

with European wines
and Greek music

CENTENNIAL HOTEL
Oxford Street

Tuesday 28th November at 7.15pm

Tickets \$55 each

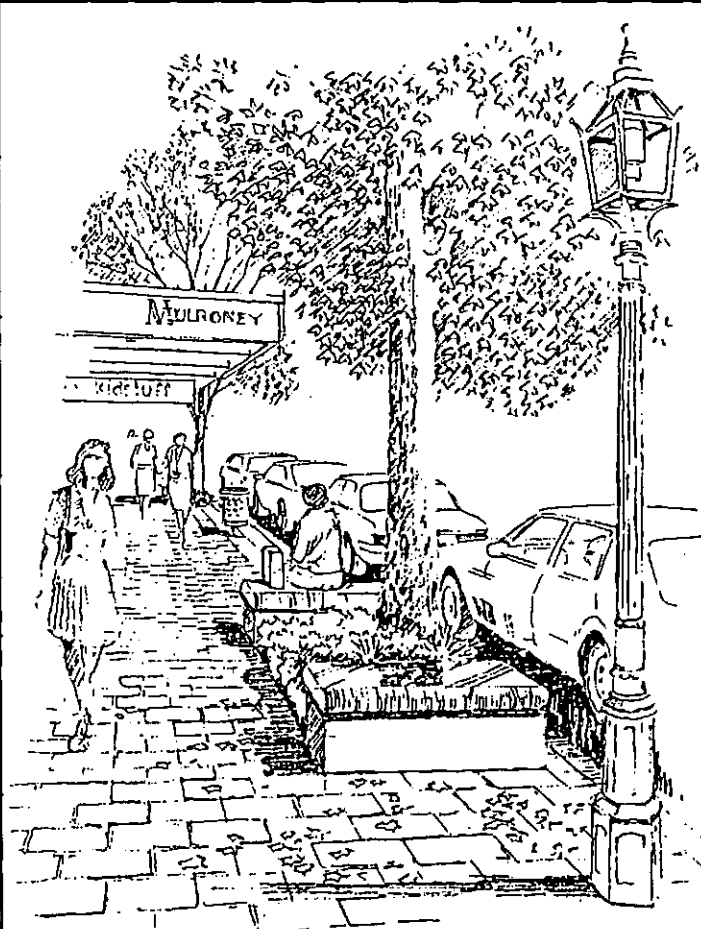
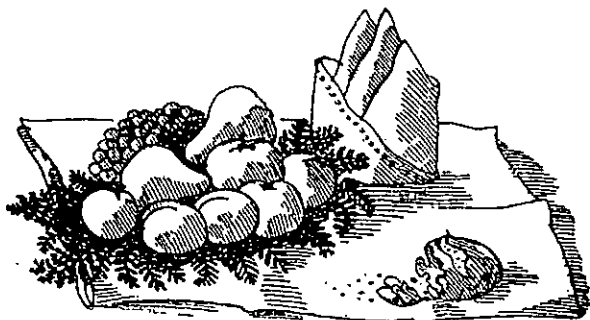
Including a glass of bubbly
on arrival and door prizes

Auction of lovely gifts
donated by local traders

Book at:
Orson & Blake Collectables, 83 Queen Street, Woollahra (326 1155).

Queen Street Association stall in Queen Street Shopping Centre on the morning of Saturday 25th November.

Or by post from the Association at Freepost 40, The Administrator, Queen Street and West Woollahra Association Ltd, PO Box 16, Woollahra, NSW 2025. (No stamp needed but please include full payment for the tickets.)



NEW SCHEME FOR QUEEN STREET

The new draft concept design for streetscape improvements in Queen Street is ready for public exhibition. It was commissioned jointly by the Queen Street Association and Woollahra Council. Local residents and businesspeople will now be invited to comment. Come and hear the scheme explained at

A NEIGHBOURHOOD COFFEE MORNING

Holdsworth Street Community Centre
Sunday 12th November
at 10.30am

Diane Stephens, the landscape architect who drew up the scheme, will explain its details and answer questions. The Mayor of Woollahra, Councillor Neville Gruzman, has promised to attend.

SHOWGROUND DEBATE

Local residents are concerned at the State Government proposal to lease 27 hectares of public land at the Showground for an entertainment complex, rather than nine hectares for a film studio. So far there has been no consultation with local residents. Our State member, Clover Moore, will lead a discussion.

COMPLIMENTARY COFFEE AND CAKE

Woollahra Antique
Centre and its
traders invite
you to see the
lovely gift ideas
at its entrancing



CHRISTMAS ANTIQUES FAIR

Saturday and Sunday
December 2nd and 3rd



Complimentary
entertainment,
drinks
and refreshments

Also come and see us on our
Twilight Shopping Evenings

Thursdays December 7th, 14th and 21st



Four in Harmony

At both the Christmas Antiques Fair and the Twilight Shopping Evenings, you will be entertained by Hi Gloss. Singing in four-part harmony, Marian, Denise, Jenny and Doris have a delightful repertoire of well-loved songs. Marian Clarke, their leader, trades at the Centre as Marian's Collection with an attractive range of antique jewellery.

WOOLLAHRA ANTIQUE CENTRE

160 Oxford Street, Woollahra

Open seven days
10am to 6pm

Ph 327 8840

Vital months on Showground

• Warwick Mayne-Wilson, the West Woollahra representative on the Centennial Park & Moore Park Community Consultative Committee, reports on recent events:

THE next few months will be decisive in resolving the issues arising from the proposal to grant a long lease for the Fox film company's studio and entertainment complex at the Showground.

The State Government now intends to lease 27 hectares of the Showground to Rupert Murdoch's company instead of nine hectares.

A regional environmental plan for the whole Moore Park-Showground complex has apparently been abandoned.

Begun last February, this was allowing inputs from a wide range of affected stakeholders and addressing all the complex planning issues involved.

The State Government has announced that it will use a State Environmental Planning Policy to control future development at the Showground site, thereby excluding South Sydney Council from control over developments.

So far on the Showground proposal, the State Government has not consulted the public in general or residents in the affected area in particular.

The Member for Bligh, Clover Moore, and the Centennial Park Residents' Association have already highlighted their concerns at rallies and in vigorous written representations to the State Government.

The subject will also be one of the principal topics at a meeting called by the Queen Street Association on the morning of Sunday, November 12 (see page 1).

We have yet to hear what rental will be paid by Fox Studios for the lease of the Showground, and whether it will be paid to the Centennial Park & Moore Park Trust.

Such money would enable the Trust to undertake the urgent maintenance and rehabilitation work necessary to allow the fabric of these century old parks to withstand visiting rates of 5.1 million people a year.

(After this report was compiled, Fox Studios revealed details of its plan and announced it would send a letter to 10,000 residents near Centennial Park. The plan would be open for public scrutiny for at least six weeks.)

Distributor questions

Initial consideration has begun of the detailed proposals submitted by three tenderers for the construction of Stages 2 and 3 of the Eastern Distributor.

An assurance has been given that an environmental impact statement would be prepared on which the public could comment.

However, we have yet to be informed of the extent to which the authorities are addressing the nexus between the proposed entry and exit portals of the Distributor near Drivers Triangle; and the increased traffic generated by the extra 5000 or more cars bringing patrons day and night to the new entertainment complex on Drivers Avenue.

Other developments include:

- Launching of a series of workshops in August and September to obtain inputs from the public and interested specialists on issues and policy directions that the new management plan for the two parks should address.

The Centennial Park & Moore Park Trust's planning team is now mapping out the values identified in the workshops, and also defining the guiding principles. They aim to have a draft plan available for public comment by mid 1996.

- The rejection by South Sydney Council of the application by McDonalds to erect a fast food restaurant adjacent to the tennis centre in Moore Park, close to the former Colonial Diner.

It is not known if McDonalds will contest this decision in the Land and Environment Court.

- Finally, most of the water hyacinth has been removed from the Randwick Ponds and a major report has been received on measures to rehabilitate all the ponds, at a cost of around \$3.2 million.

BEVERLEY HOLT, RN, SMT Dip: IHHT Dip.

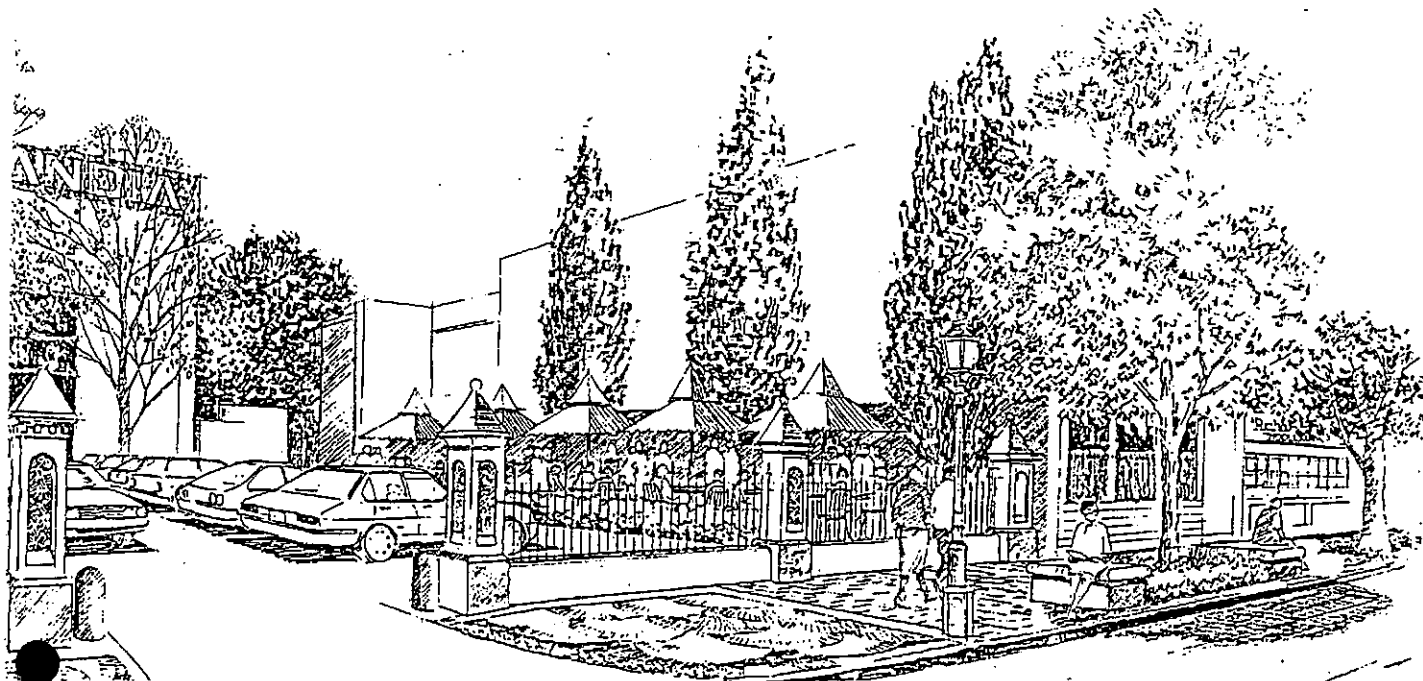


AROMATHERAPY

SPORTS, REMEDIAL AND SWEDISH MASSAGE

AUSTRALIAN HEALTH CARE CENTRE
57 QUEEN STREET, WOOLLAHRA

TEL: 362 4671
TEL: 363 9151



\$1.75 million scheme for a better Queen Street

THE new scheme for improvements in Queen Street, commissioned by Woollahra Council and Queen Street Association, would cost an estimated \$1.758 million using gang sawn granite for the pavements.

The cost would reduce to \$1.323 million using reconstituted granite, with its poorer frictional properties, as in Oxford Street, Paddington.

Local residents will be able to consider the three-stage scheme when it goes on show this month (see page 1). At present it is provisional and can be changed in the light of public comment.

Diane Stevens, the local landscape architect who evolved the scheme, defines her brief as to improve the functional and visual amenity of Queen Street, and enhance its history and sense of place.

A highlight is the proposal for the Packer Lane carpark where approval would be sought for the existing roadway to operate as a carpark entry (see illustration above).

Diane also proposes a fence with columns and hedge along the Queen Street frontage.

The proposed bas-relief memorial to Banjo Paterson would form a panel within the fence.

Also, a leased outdoor setting and eating area beside Zigolinis would add activity and colour to the street.

Underground power lines

Queen Street/Moncur Street intersection: A focal point would be created with a symmetrical decorative design in the roadway. Power lines would be underground, signage rationalised and new street lighting provided.

Paving: The paving options mentioned above would be for the commercial areas. Bitumen would still be used outside residential properties but it would be relaid and the present patches of concrete replaced with bitumen.

Footpaths: These would be extended at the corner of Halls Lane. Also at the Spicer Street corner to increase pedestrian safety and provide an outdoor facility for Panda's Cafe.

Tree planting: Some replanting would occur, particularly west of Moncur Street where new plane trees would form a complementary canopy to the east end of Queen Street. Inter-planting of small water gums are recommended for winter greenery.

Street furniture: Two types are proposed —granite seats with greenery in the retail precinct and simplified Victorian style cast iron and timber seats in the rest of the street. Perforated metal litter bins would be provided throughout Queen Street.

Lighting: On the pedestrian areas, cast iron columns would be introduced with gas lantern style fittings. However, the illumination would be electric.

Traffic circulation: The scheme proposes one-way traffic in Moncur Lane; Spicer Street; Packer Lane between Spicer and Moncur Streets; and Halls Lane between Queen and Rush Streets.

The scheme also includes proposals for improving Davies Reserve, pedestrian safety, bus shelters, public telephones and an overall colour scheme.

Queen Street's boutique hotel
circa 1870s

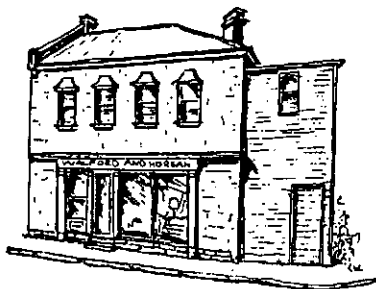
The Hughenden

- Traditional breakfast from 7.15am daily
- Victorian dining
- Tea Rooms open all weekend
- Classical recitals on Sunday afternoons
- Art exhibitions by Australia's well known artists
- Christmas functions
- Ensuited accommodation

We take great pleasure in offering the guests of the historic Hughenden a special experience through our traditional hospitality and personal style of service.

14 Queen Street
Woollahra
Ph 363 4863

WALFORD AND HORGAN



Leslie Walford and Cornelius Horgan have combined to provide an even more talented and creative design team

Visit us for the finest of all interior design

117 JERSEY ROAD, WOOLLAHRA
PHONE 363 4446

Selling European & Oriental Works of Art Since 1796

We will provide you with a London
auction valuation in absolute confidence
without any obligation to sell.

For further information please telephone Alison Harper on
(02) 326 1588
158 Queen Street, Woollahra NSW 2025



THE GREAT LONDON AUCTION HOUSE WITH A BRANCH NEAR YOU

LOCAL TABLES

Court up with at last

CAFFE AGOSTINIS
*Queens Court,
Cnr Queen and Moncur Streets,
Woollahra.*
Telephone: 328 6140

DESPITE a complimentary report from my wife, who took a party of overseas visitors to Caffe Agostinis when it first opened in January, it was not until last month that I made my own pilgrimage.

In the meantime, I had twice tried to patronise Marg Agostini's phenomenal success story, only to find every table occupied.

Having at last made it, I can report glowingly that the food is fresh, fastidiously served and delicious; the service youthful, polished and attentive; and the prices highly reasonable.

Marg certainly deserves to be doing turnaway business, though I understand it is easier to get a table during school holidays when so many Woollahrans are away.

My wife and I lunched at Agostinis on a Thursday, arriving at noon to make sure of a table.

Fussy eater

When it comes to meat, I am a fussy eater, liking a small quantity which will melt in the mouth. This is certainly what the Steak Sandwich with Garlic Mayonnaise (\$10.50) accomplished.

The bread content was delicate slices of crisp toast and the mayonnaise only lightly infused with garlic. The small medallions of steak were partnered with a crisp salad of spinach and tomato, plus a small serving of tasty, thin potato scallops.

Other lunchtime possibilities were my wife's largely vegetarian Antipasto Plate (\$10.50), Rissoto (\$10.50), Homemade Pasta (\$10.50), Carpaccio of Beef (\$10.50) and Corn Fritters (\$8).

Desserts were of the cold variety. We shared generous slices of a tart with a tangy lemon filling and Berry Tart (\$4.50 each) followed by freshly brewed coffee (\$2).

Agostinis is unlicensed, although it welcomes BYO patrons at \$1 a head. We enjoyed the fresh squeezed orange juice (\$3.50) and a home style lemonade (\$3).

These and the sound coffee and tea (also \$2) are available all day for the "droppers in" as also are Penelope Sach teas (\$3).

We have yet to dine at Agostinis in the evening, when I understand the dishes are more substantial. To keep up the excitement, Marg is changing the dinner menu every five weeks.

The ambience at Agostinis is very pleasant, with an open kitchen along one side of the indoor area, and tables with decorative umbrellas in the courtyard to invite outdoor eating.

Agostinis is open seven days a week, from 8am to 10pm, except on Sunday when it closes at 4pm. Bookings are not accepted—so take your chance.

R.B.

★ ★ ★

AS a boutique hotel in a Victorian building, the Hughenden in Queen Street has had the delightful idea of providing a traditional, elaborate English high tea on the first Sunday of the month.

With a pot of tea of their choice, patrons may enjoy such mouth-watering delicacies as warm chicken and mushroom crescents, quiche tartlets, finger sandwiches, and buttermilk pikelets with jam and cream. The all-in price is \$12.50.

The Hughenden also serves dinner on Thursday, Friday and Saturday, and is open every day for breakfast.

Co-proprietor Elizabeth Gervey tells me the hotel is usually booked out over the weekend and wishes that Queen Street shops were open on Sunday when her guests would have time to appreciate them.

The hotel's downstairs dining room doubles as an art gallery. Currently showing is the vibrant work of Wendy Sharpe who won this year's Portia Geach prize for women artists.

(The Hughenden, 14 Queen Street, Woollahra. Telephone 363 4863.)

Guide to antiques and fine arts in Queen Street

AN excellent concise guide in colour to 37 antiques and fine arts shops and galleries in and around Queen Street is included in this Village Voice.

Many changes have taken place since the last shopping guide was produced in 1991. The simpler format of the new guide will enable it to be more easily updated as changes occur.

The guide has been produced as a co-operative venture among the traders under the leadership of Michael A. Greene antiques and I. & B. Perryman who sells antique and decorative rugs and carpets. The detailed editorial work was handled by Victoria Greene.

WE'RE STILL TRAVELLING WELL!

This year, Ursula King Travel of Jersey Road was again a finalist in the Travel Agency of the Year awards. This means we are one of Australia's top five travel agents.

And last year, of course, we were proud winners of the supreme award.

But there's something else we're proud of — being part of the West Woollahra community and offering our acclaimed service and courtesy to local people and businesses. There is even a special discount for local residents.

So if you plan to travel, come and see us first. Not only are we the nearest — we're the best!

URSULA KING TRAVEL
178 Jersey Road, Woollahra
Ph: 362 4622

Developments ignore West Woollahra Plan

ONE of the main reasons the Queen Street and West Woollahra Association was formed in 1972 was to preserve the scale and fascinating heritage character of our area.

As a result, in its earlier years the Association devoted considerable resources to persuading Woollahra Council to adopt the West Woollahra Plan, finally gazetted in 1985.

Its most important elements are a 9.5m height limit for new buildings and a conservation zoning over the whole area.

Ten years later, it is a great disappointment to find the principles of the plan have been significantly contravened in two large developments recently approved.

These are the plan for five large townhouses at the corner of Jersey Road and Moncur Street, and the redevelopment of Ronald Coleman Lodge, the hostel for aged people at 88 Wallis Street.

The Association objects to the townhouse development scheme because, despite amendments to the original plans, part of the end of the row of houses will be built right up to the pavement at this important gateway approach to Woollahra, without any setback.

Appeal success

To its credit, Woollahra Council has opposed this aspect of the plan. But the developer, the Uniting Church, has won an appeal to the Land and Environment Court, largely on a technicality.

Both the administrator of the Queen Street Association, Robin Brampton, and the Mayor of Woollahra, Councillor Neville Gruzman, an architect, gave evidence at the court hearing.

The plans for a new, much enlarged home for 70 aged people between Wallis Street and John Street, was pushed through in the last week of the previous Woollahra Council, before the September elections.

The developer, again the Uniting Church, succeeded despite the opposition of the Association and several local residents, and the recommendation of the Council's area planner, Peter Eccleston.

Peter pointed out that the three-building complex would rise to a height of 16m, com-

pared with the 9.5m maximum for a conservation area in the West Woollahra Plan.

Council's Urban Conservation Advisory Committee recommended that the building be re-designed to ensure that its character was compatible with the neighbourhood and enhanced the amenity of the district.

The Association has written to the Mayor, expressing its concern, and hopes for an opportunity to discuss the matter both with him and our local councillors.

Traffic calmer, still intense

HOW are the traffic calming measures in Ocean Street working out?

Action was finally achieved late last year after years of pressure by the Association and then by the specially formed OSNOF (Ocean Street not Ocean Freeway) group.

OSNOF President Nick Eddy says that while he is delighted with the calming measures, he does not believe they have had any effect on traffic volume.

However, the traffic has been slowed down and it is easier for pedestrians to cross Ocean Street.

Also, OSNOF is pleased with the effectiveness of a supplementary pedestrian crossing in Jersey Road, opposite Goodwin Village.

Nick believes there will be no real reduction in Ocean Street traffic until Stage 2 of the Eastern Distributor is built, or traffic turning right from Oxford Street into Ocean Street is reduced to one lane.

"We deliver . . ." but when?

THE Association is concerned that, with the ending of sorting at Woollahra post office in Queen Street, deliveries are often later in the day.

Since sorting for our area switched to Bondi Junction, mail has sometimes arrived at the Association office in Tara Street as late as 5pm.

The Association has protested to Peter Gillham, manager of the Darlinghurst Delivery Network. No reply had been received when we went to press.



The toast is Goodwin Village

The special feature in the previous "Village Voice" on the Goodwin Village retirement residences was published just before the 25th anniversary celebrations — a service at All Saints Church followed by a well-attended lunch.

At the lunch, Norman Brunson, chairman of the board of Anglican Retirement Villages, cut a birthday cake and then raised his glass to the future of the village. With him in the picture is Goodwin Village manager, Katrina Gould.

Apart from its interest in Goodwin Village, the Queen Street Association has also this year supported Woollahra Senior Citizens Welfare Association with the gift of a magnificent new television set for its centre on Gaden Reserve.

Queen Street Association president, Graham Freudenberg, presented a \$700 cheque to buy the set at the annual meeting in May to Senior Citizens' president, Heather Johnson.

Keeping crime out of Queen Street

FOLLOWING two recent armed hold-ups at Queen Street shops and a number of overnight break-ins, the Association sought a meeting last month with the police at Paddington.

Three Association directors and the administrator had a useful exchange with the acting patrol commander, Sergeant Greg Summers, and Detective Sergeant Ken Bowditch.

Surprisingly, Sergeant Summers told us that the crime rate in Queen Street is comparatively low. It seems high because of the nasty and well known raids on particular shops.

And, apparently, shops have become a more popular target for hold-ups now that increased security has made it difficult to rob a bank.

The police agree that more foot patrols are needed. And despite continual staff shortages, Sergeant Summers believes the situation will improve in the new year when a leave backlog is eliminated.

The sergeants told us that one of the great times wasters for patrol officers is being called to so many false alarms. It is now an offence to have a consistently

faulty burglar alarm, with fines up to \$2000.

Apart from ensuring their burglar alarms only go off in a real emergency, business people can help the police by not carrying large sums of money "on the street" to tempt a hold-up.

Sergeant Bowditch points out that shopkeepers are responsible for their own security. It may be tempting fate, for instance, to place the cash register near the door.

Finally, we were assured that despite the rarity of seeing beat police in Queen Street, the police can be on the spot in less than three minutes in answer to a 000 call.

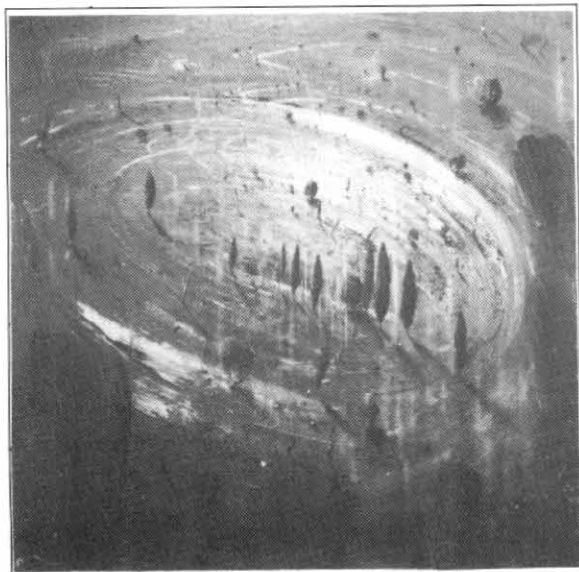
Warwick joins parks trust

QUEEN Street Association is pleased to note that its newest director, landscape architect Warwick Mayne-Wilson, has been elected chairman of the Community Consultative Committee for Centennial Park and Moore Park.

As a result, he also becomes a member of the Trust which administers the two parks.

Warwick, who lives in Ocean Street, represents West Woollahra on the Consultative Committee.

KEN JOHNSON



Arc Elevation

119cm x 119cm

DIVERSITY

PAINTINGS AND SCULPTURE

15th November until Christmas

SPRING COLLECTION

Allcot, Ashton, Condor, Forrest, Herman, Heysen, Lindsay, Lymburner, Maguire, Rees, Shead.

Now until Christmas.

CHRISTOPHER DAY GALLERY

Cnr Paddington St and Jersey Rd, Woollahra, NSW 2025
Tel: (02) 326 1952 Fax: (02) 327 5826 Mob: 018 403 928
Monday-Saturday 11-6, Sunday 2-6.
EST. 1979



Louise Granville

Member of the Australian
Institute of Landscape
Designers and Managers

Shop 2

101-103 Queen St
Woollahra, NSW 2025
Ph and Fax: 363 2654

a m a n d a
Garrett
design

EXCLUSIVE INDIVIDUAL
CREATIONS FOR YOUR
WARDROBE AND SUPERB
READY TO WEAR CLOTHES.
CALL AND SEE US!

14A QUEEN STREET, WOOLLAHRA 2025
PH 360 2732 AH 634 7091

TIBET GALLERY

EXCLUSIVE RUGS AND
DECORATIVE ARTS FROM
THE LAND OF SNOWS

22 Queen Street Woollahra
Phone and Fax: 363 2588



THIRTY-Three Men and a Red-head . . . it sounds like the title of a cheeky Hollywood film.

But Queen Street masseur and aromatherapist, Beverley Holt, had the unusual experience of being the only female in the Wallabies World Cup squad which went to South Africa this year.

Welsh-born Beverley, a qualified nurse, claims that her aroma therapy oils from England, usually combined with massage, can prevent or reduce muscle or injury soreness and ease stress.

She practices at the Australian Health Care Centre where her wide range of clients, many local, includes brides who want to look their healthiest, unstressed best on the big day.

She also claims a good success rate using aromatherapy to treat women's problems and can massage women through various stages of pregnancy, using different oils for the ailments it can bring.

And rather charmingly she tells me: "Twenty per cent of my clients are elderly men and ladies, especially widows and widowers who benefit from massage as they miss physical contact with their partners.

Beverley imports some 60 varieties of aroma therapy oils and her special blend for the Wallabies combined black pepper, rosemary and lemon in a "carrier" oil.

And how did she get on with her Wallaby team mates?

"They were real gentlemen,"



Written with respect and affection . . . Artist Bob Dickerson and his wife, Jenny, who has just published a book about him.

Telling Bob Dickerson's story

by Heather Smith

ARTIST Bob Dickerson, who has lived and worked in Queen Street for many years, is the subject of a new book, *Robert Dickerson Against the Tide*, published earlier this year.

Written over five years, it is an uncompromising view of Dickerson's life, coming from someone who obviously has immense respect and affection for the artist — his wife of 25 years, journalist Jennifer Dickerson.

The idea was to produce a book which told Bob's story accurately and in the correct order of events, plus making sure his works were shown chronologically and the colours reproduced to do justice to the originals.

The book covers his childhood in Sydney city through his marriages and association with John and Sunday Reed, his life in Queensland and, in full circle, his return to Sydney.

With a foreword by Elwyn Lynn, the book is very readable

with good continuity and gives an insight into the infancy of the art scene in the '50s.

Included are discussions and interviews between the artist and journalists taken from taped material. His attitude to his work and his critics reveal a refreshingly honest person.

Much more than a coffee table book, it has 168 illustrations which include fine examples of his early and later works. These give much from which to draw a comparison of his style over the years.

Whether you love or hate Robert Dickerson's work, I would suggest snapping up a copy ASAP — preferably a signed one!

Robert Dickerson Against the Tide, by Jennifer Dickerson is published by Pandanus Press. Available from Queen Street Fine Art Gallery, 34 Queen Street, Woollahra, in soft cover at \$45 and hard cover at \$80. Also from leading booksellers.

ROUND ROBIN

With Robin Brampton

she assured me. "Treated me like an elder sister."

★ ★ ★

ALTHOUGH I pride myself on being a feminist, hearing the other day of an all-female barbershop quartet almost got me in a lather (oops!).

Known as Hi Gloss, they will be harmonising to beguile customers at the Woollahra Antiques Centre's Christmas Antique Fair on Saturday and Sunday, December 2 and 3.

One of the four, Marian Clarke of Spicer Street, deals in quality antique jewellery at the centre under the name of Marian's Collection.

Marian and her fellow trillers, Denise, Jenny and Doris, will also entertain when the centre holds twilight shopping nights until 8.30 on the evenings of Thursday, December 7, 14, and 21.

And in deference to the Antiques Centre's traders, who will be offering some special Christmas gifts, I'm told they will not be singing "I Can't Give You Anything But Love!"

★ ★ ★

INTERIOR decorating personality Leslie Walford has always admired Cornelius Horgan whom he regards as "a very top rate person in the field".

Cornelius once worked for Leslie, but in recent years he has made his mark in our area in partnership with Peter Moss, first with premises in Ocean Street, then Queen Street.

Now, after many years heading his business under his own name, Leslie has taken Cornelius into partnership.



Beverley Holt . . . "The Wallabies treated me like an elder sister".

So Walford and Horgan Interiors will offer an even greater wealth of experience and service from their interesting refurbished Victorian shop in Jersey Road.

Another interior decorating expert, Tom Gillies, has moved into Jersey Road together with the Colin Lennox antiques business in which he is a partner.

Formerly in Double Bay, they have taken over the one-time horse bus depot, for many years the Welsh Pine Shop and more recently Coddington Antiques.

The partners have attractively re-planned the lighting of the large floorspace which is a treasure trove of antique English furniture, glass and porcelain.

"We are thrilled to be here," Tom told me, particularly mentioning the warm welcome they had received from other local traders.

★ ★ ★

A WELCOME visit recently from the amiable Duane Norris, formerly partner in a Queens Court garden shop.

It was under his leadership as president of the Queen Street Association, from 1988 to 1991, that planning began for the refurbishment of Queen Street.

Duane now lives at Hardys Bay, north of Sydney, and is still operating the sort of garden design service that figures in awards.

And I'm happy to note that following a St Valentine's Day proposal, he was married last month to Jenny O'Reilly, a local teacher.

★ ★ ★

A BELATED welcome to Christopher and Fiona Day who last year moved their Christopher Day Gallery from a cramped Paddington shop to the corner of Jersey Road and Paddington Street.

Once a wine bar, the building was originally turned into a gallery by the legendary Rudy Komon.

Christopher tells me that sales of good art in the past few months have been "close to terrific", a welcome revival after the downturn of the early 1990s.

Although the gallery leans heavily towards the traditional, Christopher occasionally exhibits a contemporary artist he admires such as Ken Johnson whose one-man show opens on November 15.



Arthur and Barbara Cook at work in their Momentum Gallery. They offer a speedy framing service, and Arthur claims that 80 per cent of clients leave the choice of frames to him.

And until Christmas, the Gallery is running a separate Spring Collection with a galaxy of famous Australian artists including Condor, Heysen, Lindsay and Rees.

Turning to Queen Street, a newcomer is the Momentum Art Gallery and picture-framing workshop at Number 47, formerly Desks of Distinction which has moved to Erskineville.

Craftsman framer Arthur Cook, a cheerful Mancunian, and his Australian artist wife, Barbara Bouch, moved to Sydney last year from South Australia. Before Queen Street, the gallery was briefly in Cascade Street.

Initially, Momentum is showing realistic war pictures to mark the 50th anniversary of the end of the second World War, and some of Barbara's colourful paintings of flora and fauna.

★ ★ ★

I'VE mentioned before the enterprising Holdsworth Street residents who lovingly tend the tree gardens on the pavement, and leave plastic bags to encourage dog owners to take canine droppings home.

They can't win. A notice has now appeared asking mothers with babies not to use the bags for soiled nappies and leave them behind!

★ ★ ★

EVER keen to see plenty of service shops in Queen Street as well as antiques dealers, we welcome Sam and Ghada Assaf who have opened a well-stocked fresh greengrocery and mixed business at Number 146.

The enterprising Lebanese couple are trading seven days a week and open late for the benefit of folk on the way home from work.

Also we're pleased that despite the closing of the Australian Squatter's Chair at Number 113, we still have a garden shop in Queen Street. Called Twigs, it's at 101-103.

The Queen Street and West Woollahra Association Ltd

ACN 002 872 433

A residents' action association covering the area bounded by Jersey Road, Edgecliff Road and Oxford Street, West Woollahra, N.S.W. Affiliated to the National Trust. Address: Box 16, P.O. Woollahra, NSW 2025.

Patron: Neville Wran.
President: Graham Freudenberg.
Vice-President: Gail Booth.
Treasurer: Tim McCormick.
Secretary: Nick Eddy.
Membership Secretary: Mary Read.
Committee: Colin Brady, David Heimann, Ursula King, Trish Langford, Mary Read, Heather Smith, Warwick Mayne-Wilson.

Administrator and Editor of Village Voice: Robin Brampton.

Village Voice is always pleased to receive letters and contributions commenting on matters affecting the community. However, items published in Village Voice do not necessarily represent the official view of the Association.

LOCAL DIRECTORY

Pasta Rosa

- Fresh pastas and raviolis
- Delicious wood-fired bread
- Flavoursome sauces and relishes
- Many other gourmet excitements

134 QUEEN STREET, WOOLLAHRA

Open seven days, 9.30am to 7.30pm Ph 328 6368

**Women's Clothing, Shoes
and Accessories.**

READS

130 Queen Street, Woollahra NSW 2025. Telephone: (02) 328-1036.



I & B Perryman

Old, antique and decorative
rugs, carpets and textiles.

100 Queen Street, Woollahra

Ph: 327 3910



For reliable and caring service
NANNIES & HELPERS PTY LTD
Patti Graham and Vanessa Wood, Directors

- Child care – live in, live out
- Housekeepers
- Handy persons
- Domestic
- Holiday and short term care
- Elderly care
- Baby sitters
- Party Help

WOOLLAHRA: Ph 363 4221

MONA VALE: Ph 979 7893

ST IVES: Ph 488 7320.

ACN 003 551 228

Licensed Agent 1157



KIDSTUFF

126a Queen St.
Woollahra Sydney
2025 Australia
Phone (02) 363 2838

TIM McCORMICK
buys and sells

Rare Books – Manuscripts – Prints
Australian Paintings – Photographs
Australiana

53 QUEEN STREET, WOOLLAHRA 2025
Telephone 363 5383 Facsimile 326 2752

**WOOLLAHRA
HOME SERVICE LIQUOR STORE**

Serving the community since 1882 with wines,
spirits, ales and fine food.

41 Ocean Street, Woollahra Telephone: 363 1626



**APPLEY HOARE
ANTIQUES**

*Dealing in European country antiques,
unusual decorative items
and French iron garden furniture.*

55 Queen Street, Woollahra, NSW 2025
Telephone (02) 362 3045

CHARLES HEWITT

PRINTS - DECORATION - FURNITURE - FRAMES

30 QUEEN STREET WOOLLAHRA NSW 2025 AUSTRALIA
TELEPHONE (02) 327 8185



**Orson & Blake
Collectables**

*Lifestyle emporium with a superb
collection of homewares, womenswear,
menswear, artefacts and gifts from around
the world. Featuring Australian designers.*

83-85 Queen Street, Woollahra

Ph 326 1155



**G L Auchinachie & Son
Antiques & Collectables**

Specialising in 17th, 18th & 19th century
English furniture, ceramics & metals

43 Queen Street, Woollahra 2025. Ph (02) 363 4033
Open 10.30am to 5.30pm, Monday-Saturday, or by appointment

**Susan
Avery**



**59 Jersey Road
Woollahra
NSW 2025**

**FLORAL
DECORATORS**

**Tel: 363 1168
Fax: 328 7415**

THESE BUSINESSES OFFER GOOD SERVICE TO OUR COMMUNITY • PLEASE SUPPORT THEM