

VILLAGE VOICE

No. 55 NOVEMBER, 1993

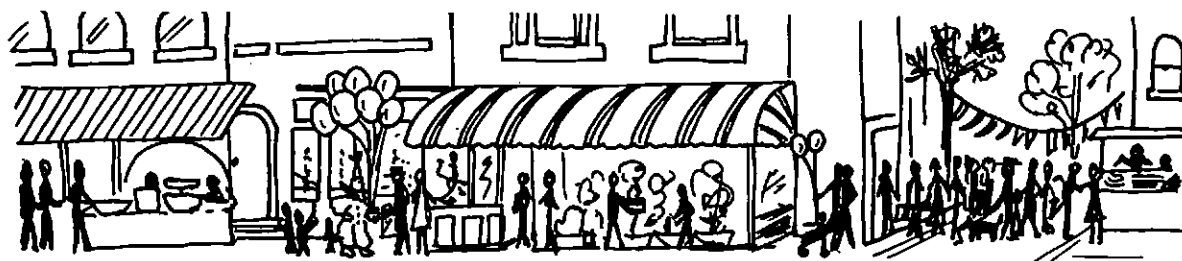
Newsletter of the Queen Street and West Woollahra Association
PO Box 16, Woollahra, New South Wales 2025

Thank you, Queen Street!

COME to Queen Street Day, about which a notice appears on this page, could not be a success without the sponsorships for the cost of entertainment and promotion.

So our gratitude goes to this year's principal sponsor, Westpac, and their local manager, David Askew. Westpac is also supporting the occasion by having its travelling museum open during the day at the 124 Queen Street branch.

Also our thanks for financial or other help promised when we went to press by Martyn Cook Antiques; Charles Hewitt Frames, Prints and Decorations; Tony Ward's Printique; Howell and Howell Antiques; the Fred Pazotti ceramic tile company; The Bridge Printery Pty Ltd; and Don Stein Plant Hire. Any others will be acknowledged in the next *Village Voice*.



Enjoy all the colour...excitement...and bargains at

COME TO QUEEN STREET DAY

**Saturday, November 27th, 9 am to 4 pm
in Queen Street, Woollahra**

MUSIC TO YOUR EARS

Free entertainment all morning in the Dorhauer Lane Carpark

9am to 11am: The musicians of Kincoppal-Rose Bay School

11.30 - 1pm: Jazz from Vivian Queen and the Royal Dukes and buskers along the street

DO YOUR CHRISTMAS SHOPPING

Wonderful street stalls run by local businesses and community groups. Plants...handcrafts...jewellery... native artifacts...ceramics...bric a brac...and, of course, Christmas cards. And the shops will be especially welcoming as they compete for a display prize.

LOTS OF YUMMY FOOD TO MUNCH OR TAKE AWAY



Come to Queen Street Day is organised by the Queen Street and West Woollahra Association Ltd. Inquiries 363 5383

Principal sponsor

Westpac

And with the support of Queen Street's business community.

Beautification of the streetscape

AS a way of improving our already lovely residential and shopping area, would it be possible to obtain co-operation from the local

Council to provide garden beds at the base of the trees in the footpaths, along Queen Street in particular.

Many residents are already tending footpath gardens in front of their homes. (Our picture was taken outside a house in Moncur Street, near Jersey Road.)

However, with support from the Council, this could well become a community based project, providing pride and pleasure for all.

Gail Booth,
John Street

• Queen Street Association president, Graham Freudenberg, comments: "We are always delighted to hear residents' suggestions on how to promote the Association's aims. "Gail Booth's suggestion was discussed at a recent directors' meeting and streetscape improvements in Queen Street will be a major association project for next year."



Australia's **first** specialist retail furnishing trimmings shop will delight home decorators with its unique and extensive range of:

- Curtain Tie Backs • Tassel Fringes • Gimps
- Piping Cords • Key Tassels • Braids • Bullion Fringes
- Rouching • Brass Accessories

HARLEQUIN TRIM
180 Jersey Road, Woollahra
Tel: 326 2929

LOCAL TABLES

Not such a mere Bagatelle

BAGATELLE RESTAURANT
132 Jersey Road
Woollahra
Telephone: 328 1939

NEW – BAGATELLE CHEF/OWNER proclaims the sign outside the Bagatelle in Jersey Road in such bright, mammoth lettering that even the partially sighted would get the message.

The new boy is Sydney-sider Shane Springett, back from Adelaide where he cooked at the famous Chloe's, and I'm happy to report that his culinary skills are considerably more subtle than his promotion.

Shane and his wife, Julie, have succeeded Jean-Luc Lundy who restored occidental cuisine to the former Patrick's after its short but glorious Japanese adventure as Zeami.

I have dined twice at the Bagatelle in recent weeks, the first time with a charming, cosmopolitan friend; the second in a party of five which included the export manager of a famous French silverware and tableware company.

My verdict is generally favourable. Shane is a painstaking culinary artist and has some deft, original touches in his sauces and other accompaniments.

My friend from Paris was impressed not only with his artistry but the freshness of the ingredients.

The Bagatelle's menu is short – and, be warned, not inexpensive – with five entrees, five or six main courses, and some interesting daily specials.

On the first visit, being something of a sausage fancier, I was delighted with the unusual duck neck sausage of Shane's own making, served with a warm madeira glaze.

It had disappeared from the menu on my second visit,

but I enjoyed instead an entree of smoked trout, tangily balanced with celeriac in a seaweed mayonnaise.

However, for their preliminary bout, most of the party went for the quail with a painstakingly created risotto of wild mushroom – quite delicious when I was permitted a taste.

The menu on both visits was strong on meat. Several of our party applauded the rack of lamb, divided into separate tiny cutlets and served with dijon mustard, fresh herbs and tomato jus.

I was more adventurous, choosing the roast duckling with caramelised raspberries, an excellent combination but the flesh of the duckling was touch less tender than I prefer.

From the separate dessert menu, I relished a robust portion of strawberries in cognac. My wife enjoyed the superb creme broulee with almond tuile.

The Bagatelle's wine list is comprehensive and well chosen, covering the four major wine-producing Australian States and including some notable smaller wineries.

Our choice embraced a Jim Barry Clare Estate Chablis (\$22.50), a Platts Cabernet Sauvignon (\$23) and the house recommendation of an Alkoomi Frankland River Classic White (\$22.50).

But if we had been celebrating winning the Melbourne Cup, we could have chosen between a 1980 Grange Hermitage and a 1977 Chateau Latour, both at \$150.

As for food prices, nothing quite so disturbing. Apart from a Caesar Salad (\$9.50), the entrees were \$11.50 and \$12.50 and the main courses all priced at \$19.50.

Finally my compliments to Julie who manages the front of house with discreet style.

R.B.

**Susan
Avery**



**FLORAL
DECORATORS**

59 Jersey Road
Woollahra
NSW 2025

Tel: 363 1168
Fax: 328 7415



Council receives Banjo Paterson wall proposal

THE Queen Street and West Woollahra Association's proposal for a Banjo Paterson memorial wall in Queen Street is now before Woollahra Municipal Council.

This follows an encouraging meeting in October with the newly re-elected Mayor, Councillor Andrew Briger.

At this, the scheme was outlined by Association president, Graham Freudenberg, and prominent Association member, Robin Brampton.

The wall would honour the valuable contribution to Australian cultural life of Andrew Barton (Banjo) Paterson (1864-1941) who wrote *Waltzing Matilda*.

Banjo lived twice in Queen Street. From his marriage in 1903, at the age of 39, until 1908, he lived at Number 135 Queen Street.

Later he lived at The Grove, off Queen Street, and when he died his home was in South Avenue, Double Bay.

The proposed wall would face Queen Street at the edge of the Dorhauer Lane carpark on a narrow strip of land which is at present landscaped and includes the Association notice board.

It would form a central feature to interest the multitude of people who

ASSOCIATION REPORT

visit Queen Street and hopefully become as affectionately regarded as the Little Mermaid of Copenhagen or the Dog on the Tucker Box at Gundagai.

Comic characters

As illustrated above, the wall would include three panels in bas relief by Sydney sculptor Gaye Porter.

The central panel would include a head of Banjo and memorial inscription. The other panels would be humorous illustrations from two of his poems, *Mulga Bill's Bicycle* and *The Man from Ironbark*.

The Association has suggested that the wall should be constructed of bush stone from Wee Jasper on the Upper Murrumbidgee where Banjo and his family lived after they first left Queen Street.

We also feel that the plants in front of the wall should be those mentioned in an article, *The Amateur Gardener*, which Banjo wrote when he lived in Queen Street.

As for financing the project, we suggest that the Council provide the wall and plantings, and a subscription fund

be opened for the bas reliefs, estimated to cost \$31,500.

Not a dazzling success

SEVERAL local residents have expressed concern about the savage pruning of two nicely developing liquidamber trees outside the medical centre at the corner of Queen Street and Victoria Avenue.

With one tree, only a stump of trunk has been left, while the other has some surviving greenery.

The desecration certainly has not been done by, or with the permission of, Woollahra Council.

"I'm pretty shocked about what has happened there," the Council's municipal trees officer, Robert Kerr, told the Association. "There's no way we would condone that sort of activity."

Mr Kerr is investigating the destruction but he tells us it probably will be necessary for both trees to be replaced.

Residents are also concerned about the blinding effect of two spotlights mounted on streetlamp poles to focus attention on the medical centre which is up for sale.

Councillor David Leach, who

continued next page

Our magnificent showroom, with its superb range of furnishing fabrics, is right in the middle of Queen Street. Come in and discuss your interior decoration needs, entirely without obligation, with a company which has a longstanding reputation for service, creativity and professionalism.

James Morland
Interiors

*Style, Beauty and Comfort
need not be expensive*

146 Queen Street, Woollahra
Ph 363 5798/0435

continued from page 3

investigated for us, says the spotlights were installed by Sydney Electricity at the request of the medical centre which presumably paid for the work.

Because of the complaints, a request has been made for the spotlights to be better shielded.

Still waiting

THE Association has fought long and hard for a reduction in through traffic passing down Ocean Street, a battle now being fought by the OSNOF residents' group (Ocean Street Not Ocean Freeway).

In July, Woollahra Council decided to ask the Transport and Roads Minister, Bruce Baird, to receive a deputation which would seek to establish a ministerial working party.

This would address the problems identified by OSNOF which would be invited to provide a representative on the deputation.

Unfortunately such good intentions seem to have become a casualty of the

administrative hiatus at Woollahra Council and nothing further has happened.

"It's a frustrating exercise," commented OSNOF president Nick Eddy.

Park access

OUR representatives on the Centennial Park and Moore Park residents' forum, Mollie Lenthall, reports that it is considering traffic in the surrounding area.

She points out that access to Centennial Park is now extremely difficult for traffic coming out of Wallis Street as it can only turn left.

Also, to cross Osford Street on foot at this point is highly dangerous as you have to negotiate three lines of speeding traffic each way.

Mollie suggests that residents might press for the re-opening of the two way vehicle crossing at Wallis Street and an additional pedestrian crossing or pedestrian lights at this spot.

Comments are welcome but should go directly to Robin Grimwade, Director, Centennial Park Trust, Centennial Park, NSW 2021.



Residents told of Queen Street plans

Queen Street Association president Graham Freudenberg (left) discusses with sculptor Gaye Porter her plans for the Banjo Paterson memorial wall in Queen Street. With them is Muchsin Russ of the Asia Pacific Arts Foundation. The picture was taken at a coffee morning, attended by some 60 local residents, which the association arranged in August to explain both the Banjo Paterson memorial plan (see page 3) and the Asia Pacific Arts Foundation's scheme to develop the burned out Uniting Church building in Jersey Road as a creative and community centre. Also architect Alex Tzannes and the Uniting Church's property consultant, Carol Baker, outlined proposals for five town houses and a new manse at the corner of Jersey Road and Moncur Street.

LESLIE WALFORD INTERIORS



OUR NEW PREMISES ARE AT

117 JERSEY ROAD
WOOLLAHRA

For the finest of all Interior
Design — visit us.

Every ingredient • Every service
Every budget • We know the market
Talk to us!

PHONE 363 4446



Jewels of The Loom

Antique Textiles, Carpets, Kelims
Persian Decorative Arts

Courses for Textile Enthusiasts
Expert Restorations, Cleaning Services,
Valuations

162 Queen Street
Woollahra NSW 2025
TEL: 362 4400

• Member of the Persian Carpet Dealers Association of Australia •
• Associate & Advisor to the Carpet Museum of Iran •



With Robin Brampton

QUEEN Street Association president, Graham Freudenberg, tells me he will feel a touch of local pride every time he spends one of the new \$10 notes.

It depicts two local historical personalities – Banjo Paterson who lived twice in Queen Street and Dame Mary Gilmore who once lived in Ocean Street.

INEVITABLY the lively commercial atmosphere of the Queen Street area has led to another bunch of business changes to chronicle.

So welcome to Pamela Massie Greene who has brought her Coddington Antiques to Jersey Road; to Jayne Whitehouse whose interior decor business is now at 74 Queen Street; and Nasrin Assassi who has taken over the hairdressing salon in Queens Court.

Pamela is a long standing identity in the Sydney antiques world, having been selling her 17th and 18th century furniture, silver and glass since 1971.

But she has decided to move from a shop near her Mosman home to the old horse tram depot building, for long the Welsh Pine Shop, at 63 Jersey Road, near Rush Street.

It's ideal for her business, providing plenty of floorspace for the top quality antiques she imports. And from my observation on a Saturday morning, she is creating plenty of interest.

Jayne Whitehouse has taken over the premises at 74 Queen Street, once Leo's "open all hours" Continental



Um, a little extreme don't you think? This notice recently appeared beside the gate of a house in Queen Street. Now should we, or should we not, leave them a copy of Village Voice?

Delicatessen and more recently the antiques shop of Paul and Candide Attard.

Jayne has a well established interior design business which she has moved from Cross Street, Double Bay, and is now much nearer her home in Alton Street.

In addition to providing a headquarters for her interior design consultancy, the Queen Street Shop is retailing a selection of soft furnishings, gifts and accessories.

Attractive Nasrin Assassi is the second Iranian-born personality to arrive in Queen Street recently; the other being oriental antique carpet dealer Ali Hematyar at 162.

Nasrin learned her hairdressing in Iran from whence she came to Australia eight years ago, running a salon in Rose Bay before she came to Queen Street.

Before taking over at Queens Court, she had the salon completely redecorated with a russet and white wall treatment, large metal-framed mirrors and very modern equipment.

Some of the credit for the impressive effect should go to Nasrin's two brothers who migrated to Australia before her. One is a painter and decorator; the other a maker of mirrors.

ELSEWHERE in this issue, we report the concern of local residents at the slashing down of two recently planted liquidamber trees in Queen Street.

From Jill Kitson's book, *Great Emigrations*, I note an early example of environmental concern in 18th century England.

Cutting down trees in a garden or avenue was punishable by death!

WITH the sudden blossoming of women's fashion shops on the Oxford Street corner, Annette Dobinson tells me this should now be called "the Paris End of Queen Street".

Annette is manager of the new Lisa Ho fashion store



Joint owner Heather Smith and naïf artist Vali at the opening of the new Arden Galleries at 26 Queen Street earlier this month. Heather and her partner Philip Johns intend to exhibit work by both local and overseas artists, with a different one-man/woman show every month. The gallery will be open from Monday to Saturday, 10am to 6pm, and the phone number is 363 5296.

which is appearing after the complete degutting of the former Giovanni's Restaurant and candy store at 2A, 4A and 6A.

Unusually, to help create a friendly and relaxed atmosphere, the store will incorporate a cafe serving tea and coffee.

Although Lisa Ho established her well known Australian fashion label 10 years ago, this is the first time she has had a retail outlet.

One of the excitements for Lisa and Annette is that they will be able to showcase the complete Lisa Ho range of up-to-the-minute fashions, from jeans to formal wear.

Annette tells me the store will have enormous potential to help a customer build up her wardrobe, but the emphasis will be on friendly, personal service.

Almost next door, the fashion store of the enterprising Akirai Sogawa opened late in October.

Akirai came to Australia from Japan some 6½ years ago; liked our lifestyle and wide open spaces; and decided to stay.

He established his fashion label, with the emphasis on day wear, some three years ago but as with Lisa Ho, this is his first retail venture.

In addition to selling his own creations, Akirai is importing fashion from Japan.

With Queen Street Association director David Heimann's Orson & Blake a La Mode store gracing the same block, Queen Street will soon have an interesting trio of fashion boutiques together.

And with plenty of originality, quality and choice.

W. F. Bradshaw

Clocks – Antiques – Furniture
Early Keyboard Instruments

96 QUEEN STREET,
WOOLLAHRA, N.S.W.
2025, AUSTRALIA

363 4453

76 Queen Street,
Woollahra,
NSW 2025




Tel: 326 1155

For all your gift requirements and decorative items for the home

Open Mon-Sat
10am to 6pm



LOCAL DIRECTORY



QUEENS COURT
 Serviced Offices Available
 Telephone Answering Facilities
Full Secretarial Services:
 *Word Processing/Telex *Facsimile/Photocopier
QUEENS COURT BUSINESS CENTRE
 Shop 3, 118-122 Queen Street
 Woollahra NSW 2025
 Ph: 328 7882 Fax: 327 8357



• Quality Movie Hire from \$2
 • Free membership • Parking at the door
Shop 3, 128 Queen Street (entrance Spicer St) 327 4767



I & B Perryman
*Antique carpets & rugs. Restoration,
 cleaning & valuations undertaken.*
22 Queen Street, Woollahra 2025.
Phone (02) 327 3910

*Women's Clothing, Shoes
 and Accessories.*



130 Queen Street, Woollahra NSW 2025. Telephone: (02) 328-1036.




KIDSTUFF
 126a Queen St.
 Woollahra Sydney
 2025 Australia
 Phone (02) 363 2838

TIM McCORMICK
 buys and sells
 Rare Books – Manuscripts – Prints
 Australian Paintings – Photographs
 Australiana
 53 QUEEN STREET, WOOLLAHRA 2025
 Telephone 363 5383 Facsimile 326 2752

**WOOLLAHRA
 HOME SERVICE LIQUOR STORE**

Serving the community since 1882 with wines,
 spirits, ales and fine food.



41 Ocean Street, Woollahra Telephone: 363 1626



For reliable and caring service
NANNIES & HELPERS PTY LTD
 Patti Graham, Director

- Child care – live in, live out
- Housekeepers
- Handy persons
- Domestic
- Holiday and short term care
- Elderly care
- Baby sitters
- Party Help

WOOLLAHRA: Ph 363 4221
 MONA VALE: Ph 997 3788, 979 7893
 ST IVES: Ph 488 7320.


ACN 003 551 228 Licensed Agent 1157



CHARLES HEWITT

PRINTS - DECORATION - FURNITURE - FRAMES

30 QUEEN STREET WOOLLAHRA NSW 2025 AUSTRALIA
 TELEPHONE (02) 327 8185



HOUSE OF EDWARD BEAR

**CHILDREN'S CLOTHING
 AND SHOES**

**134 QUEEN STREET
 WOOLLAHRA 2025
 TELEPHONE 328 6368**

**THE
 AUSTRALIAN
 SQUATTER'S
 CHAIR
 CO.**

113 Queen St., Woollahra 2025 Tel. 362 4203
 54 Spit Road, Mosman 2088 Tel. 968 2291 Fax 968 2286

GOING PLACES?

Then the people to help you right on your doorstep. Ursula King and her friendly team in Jersey Road can handle every detail of your overseas and domestic travel and accommodation arrangements. And they're so efficient they won the 1992 Corporate Travel Agent Award for excellence.

Special discounts for local residents

URSULA KING TRAVEL
 178 Jersey Road, Woollahra. Ph 362 4622

THESE BUSINESSES OFFER GOOD SERVICE TO OUR COMMUNITY • PLEASE SUPPORT THEM